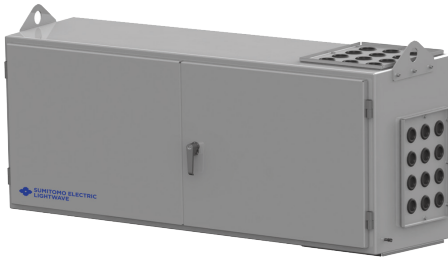


## Ultra Hyperscale eXchange Quarter U-HSX-Quarter



### Description:

The Ultra Hyperscale eXchange (U-HSX) is a solution for clients employing high fiber count ribbon cables in their networks. The U-HSX serves as the demarcation point between outside plant ribbon cables and indoor distribution ribbon cables. The U-HSX-Quarter is designed to be wall mounted and has the capacity to store 864 mass splices for 10,368 fibers. Ports are available for up to 24 distribution cables of various sizes. The cabinet comes preassembled with cable management, splice tray modules and mounting access points. An included work platform provides

more than enough space to easily splice and hold all necessary splicing tools and accessories. The work platform has multiple mounting locations to conveniently access each splice tray.

For more information about this solution, or other related products, visit [www.SumitomoElectric.com](http://www.SumitomoElectric.com).

### Specifications

Property	Specification
Dimensions	26"H x 56"W x 20"D (660mmH x 1,422mmW x 508mmD)

### Ordering Information

Part Number	Description
FTHFC-10K-SK1	Optical Cable Entrance Terminal U-HSX Quarter, Capacity of 10,368 fibers, With Starter Kit
FTHFC-ACK-3456-1728	UHSX Accessory Kit for one 3456 cable entry to 1728
	<b>Contents:</b>
	58 pk. Splice Protection Sleeves for use with mass/ribbon (2-12 fiber), 5/pack
	1 ea. Ribbon Protection sock, 5/8", 75ft Spool, PTN0.63BK
	1 ea. Hook and Loop Cable Tie Easy-Peel, 30 ft. O'all Lg., Blk, 1/2" Wd, McMaster# 9402T111
	1 ea. One-Piece Hook & Loop, 3/4" Width x 30' Length, Black, McMaster# 94905 K42
	1 ea. Trunk gland for Optical building entrance terminal, range of 1.230" to 1.560"
	1 ea. Gland Nut-UHSX, M50, Brass
2 ea. Distribution gland for Optical building entrance terminal, range of 0.787" to 1.020"	

\*FTHFC-10K-SK1 includes accessories needed for one 3456f cable termination

### Features

- High density wall mount cabinet for splicing in compact dimension.
- Suitable to 1728F and 3456F Ultra High Fiber Count (UHFC) Cable splicing.
- Up to 3pcs of 3456F Cables (10,368F) can be terminated.
- Cable entries at 3 directions: UHFC Cable from top and bottom. Ribbon Cable from side.
- Splice tray for 72pcs of 12F ribbon splices (864F / tray). 12 Splice trays loaded.
- Include all necessary accessories for the first cable installation.